
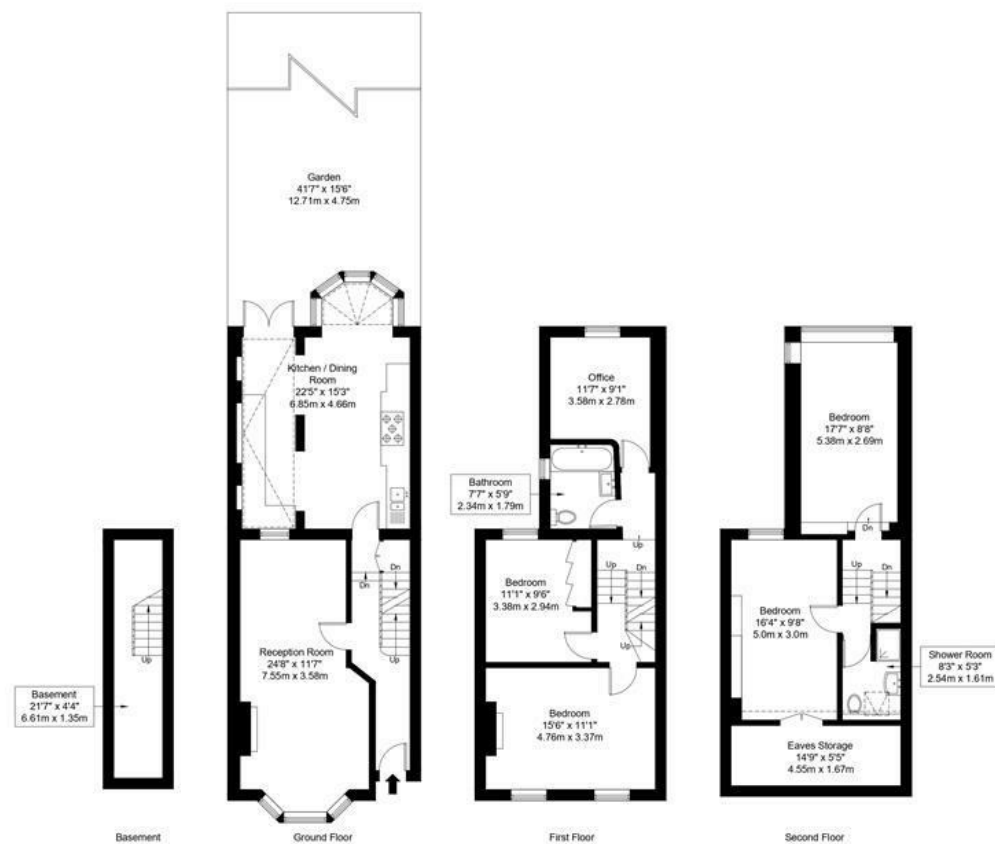


Festing Road, SW15 1LP

Approx Gross Internal Area = 160.47 sq m / 1727 sq ft
 RHH / Eaves Storage = 7.87 sq m / 85 sq ft
 Total = 168.34 sq m / 1812 sq ft

 = Reduced Headroom Below 1.5m / 5'0



Ref :

Copyright

**BLEU
PLAN**

The Floor plan is not to scale and measurements and areas shown are approximate and therefore should be used for illustrative purposes only. The plan has been prepared in accordance with the RICS code of Measuring Practice and whilst we have confidence in the information produced it must not be relied on. Maximum lengths and widths are represented on the floor plan. If there is any aspect of particular importance, you should carry out or commission your own inspection of the property.
 Copyright @ BLEUPLAN

DISCLAIMER•These particulars are intended to give a fair and substantially correct overall description for the guidance of intending purchasers and do not constitute an offer or part of a contract. Prospective purchasers and/or lessees ought to seek their own professional advice.
 •All descriptions, dimensions, areas, references to condition and necessary permissions for use and occupation and other details are given in good faith and are believed to be correct, but any intending purchasers should not rely on them as statements or representations of fact, but must satisfy themselves by inspection or otherwise as to the correctness of each of them.
 •All measurements are approximate.



Festing Road, London, SW15

A magnificent and fully extended five bedroom terraced house offering 1800sqft of exceptional living and entertaining space on Festing Road.

Located on one of the most sought after river roads in West Putney this property is beautifully presented and comes with a wealth of period features throughout.

The ground floor comprises, hallway with doors leading through to a double reception room with high ceilings, a fabulous kitchen/ dining room with patio doors leading out to a 42ft west facing garden and a full length cellar. To the upper floors there are five bedrooms, a family bathroom and a shower room. This lovely family home offers versatile accommodation and the location is ideal for access to The River Thames, Putney High Street, East Putney Underground, Putney Station, and a number of highly regarded local schools and nurseries.



- FIVE BEDROOMS
- KITCHEN/ DINING ROOM
- FAMILY BATHROOM
- ADDITIONAL EAVES STORAGE
- CLOSE TO ALL AMENITIES
- DOUBLE RECEPTION ROOM
- CELLAR
- SHOWER ROOM
- 41FT WEST FACING GARDEN
- EPC RATING: D

Guide Price
£1,650,000
 Available

