

WARREN

Residential Sales & Lettings

WERTER ROAD, SW15

A stunning three bedroom first and top floor flat, beautifully presented, with a spectacular reception room, incorporating a glass roofed dining area and south facing balcony. This immaculate flat has its own entrance off the street and is centrally located on Werter Road, a very popular road moments from the transport links and amenities of Putney High Street.

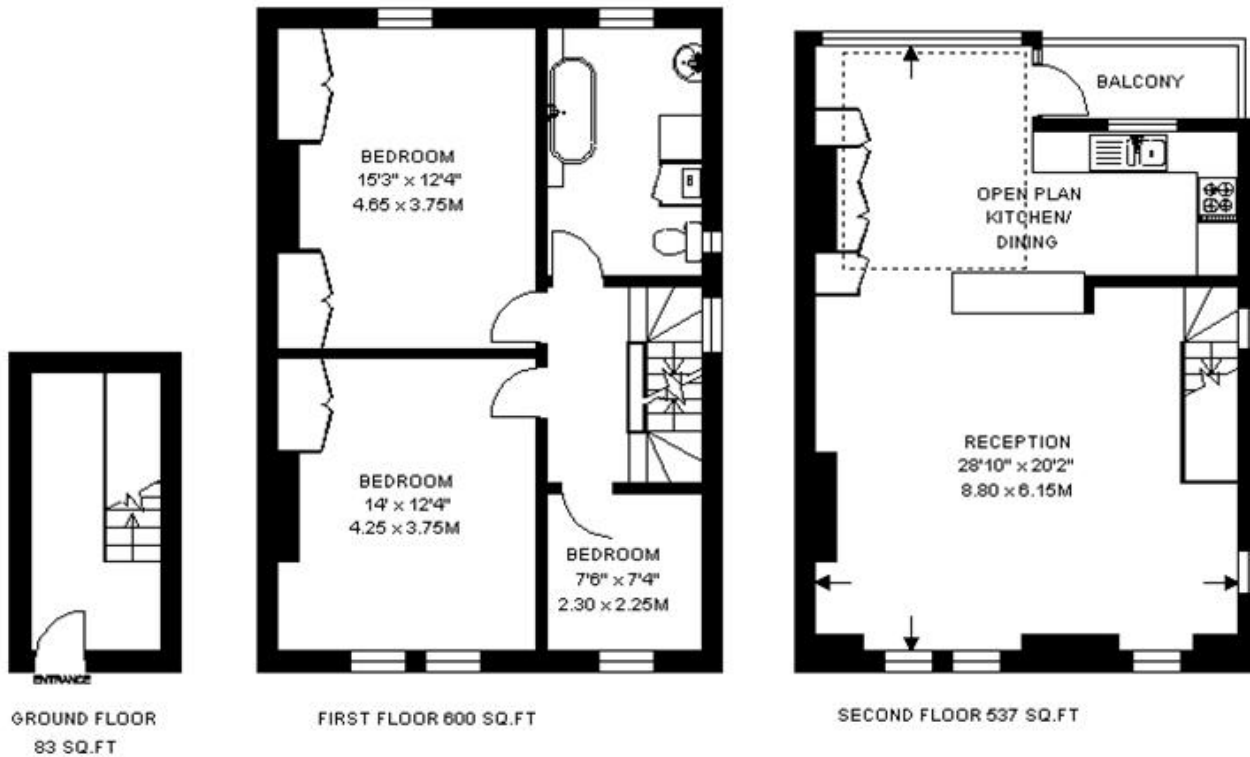


*OWN ENTRANCE *BATHROOM *TWO DOUBLE BEDROOMS *RECEPTION ROOM *DINING AREA *KITCHEN *SOUTH FACING
*BALCONY *CENTRAL PUTNEY LOCATION*

£579,950



20A WERTER ROAD
PUTNEY
LONDON SW15
APPROXIMATE INTERNAL FLOOR AREA
1220 SQ.FT / 113.3 SQ.M.



COPYRIGHT
FLOORPLAN PRODUCED FOR WARREN PUTNEY
BY FLOORPLANBERR01312841035