

WARREN

Residential Sales & Lettings

ROEHAMPTON CLOSE, SW15

Forming part of this 1930s development is this very well presented four bedroom apartment set within beautifully maintained grounds. Located just off Roehampton Lane within a quiet cul-de-sac and opposite the well known Roehampton Club, this development is within easy walking distance of Barnes Common station as well as being on all major bus routes.



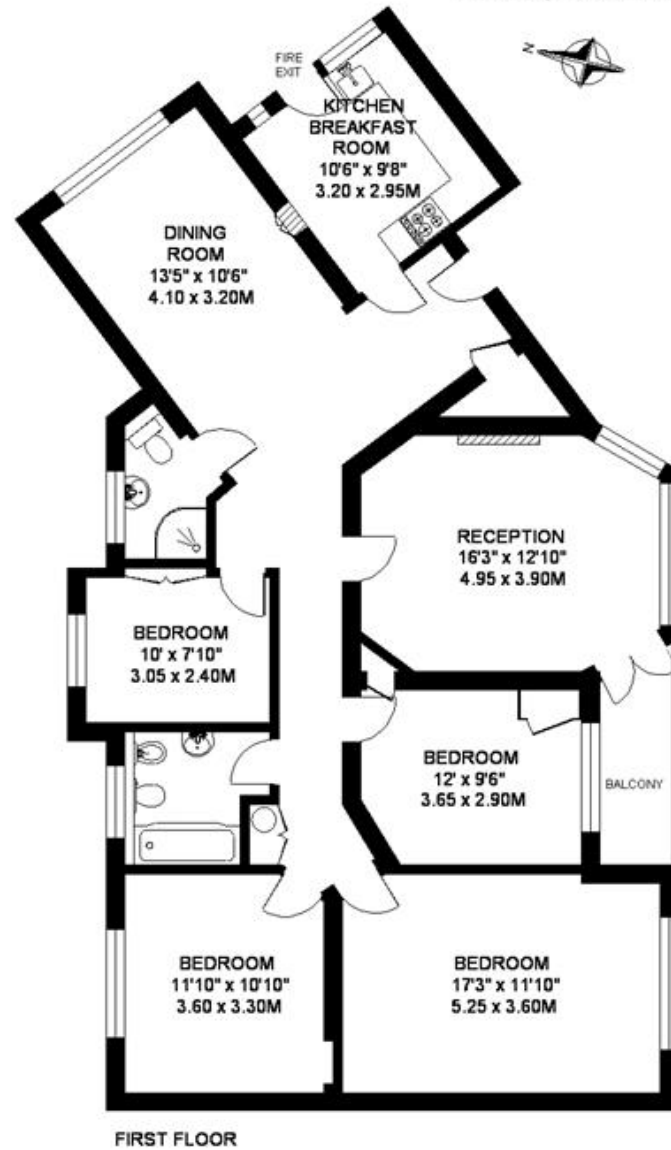
LARGE HALLWAY KITCHEN BREAKFAST ROOM *FORMAL DINING ROOM * RECEPTION ROOM *SHOWER ROOM * FOUR BEDROOMS *FAMILY BATHROOM * BALCONY* OFF STREET PARKING * COMMUNAL GARDENS* GARAGE*

£549,950



ROEHAMPTON CLOSE
PUTNEY
LONDON SW15

APPROXIMATE INTERNAL FLOOR AREA
1370 SQ.FT / 127.2 SQ.M.



FIRST FLOOR

COPYRIGHT
FLOORPLAN PRODUCED FOR WARREN PUTNEY
BY FLOORPLANNERS 01772 841099